



Head Start/Early Head Start
Annual Report
2021-22

About AVANCE



Our Mission

AVANCE creates pathways to economic mobility for predominantly Latino families through high quality, culturally responsive, two-generation programming that ensures school-readiness for young children and opportunities for parents to build social and economic capital.

Our Vision

We envision a world where all children and families have equitable access to resources and opportunities to reach their fullest potential, transforming the communities in which we live.

The AVANCE Way

Meeting People Where They Are

- We utilize a strengths-based approach when working with children, parents, providers, and staff
- We recognize that all individuals have unique needs and we design individualized programs/ trainings to meet those needs
- We recruit in the community – going to where the people are rather than expecting them to come to us

Addressing Root Causes of Inequities

- We acknowledge the systemic inequities that our families, children, and staff face and work every day to remove barriers to access and opportunities to further their education and economic mobility
- We bring community resources to our families and staff



- We teach, support, and encourage our parents and staff to advocate for themselves and their families

Providing Culturally Responsive Programming

- We recognize and celebrate the cultural diversity of our participants and our staff
- We provide culturally responsive programming that is offered in the native language of participants
- We foster a diverse working environment that acknowledges and celebrates differences
- We ensure that our staff reflects the cultural, linguistic, and lived experiences of the families, children, and providers we serve

Empowering All Individuals to be Leaders

- We recognize that our parents are leaders of their households
- We encourage parents and staff to be leaders in their communities
- We act as a catalyst for families, children, and staff to build confidence, strength, and self-sufficiency
- We offer opportunities to build leadership -- 46% of our staff are alumni of our programs



Program Options

To meet the needs of the community in Starr and Zapata counties, AVANCE proudly provides comprehensive child development and family support services for income eligible expectant mothers, infants, toddlers and preschool aged children up to age 5 in Hidalgo, Starr, and Zapata counties.

Early Head Start

Center-based services are provided beginning as early as 6 weeks to 36 months within this program option. The Creative Curriculum® for Infants, Toddlers, and Twos, researched based curriculum is designed to support learning and discovery through daily routines in a well-designed classroom environment.

Expectant Mothers

Utilizing the research-based curriculum, Parents as Teachers Foundational Curriculum: Prenatal to Three (PAT), Maternal Educators provide weekly home visits and biweekly group socialization activities to expectant mother participants. PAT provides participants with knowledge and resources to prepare for the birth of their child as well as a comprehensive process for setting and supporting family-level and child-level goals.

Home Based

AVANCE uses the home environment to help parents create rich learning opportunities that build on everyday routines and support their child's development. Families receive 90 minute weekly home visits utilizing the Parents as Teachers (PAT) curriculum. Children and families also participated in 2-3 group socialization activities per month.

Family Child Care (CCP)

AVANCE delivers the full range of Early Head Start Services to children ages 0-4, by contracting with licensed family childcare providers in their home or other family-like setting. AVANCE monitors for health/safety and compliance every two weeks. As part of the Family Child Care partnerships, all Family Childcare providers receive training, coaching, and support in the implementation of the early childhood curriculum—Creative Curriculum for Family Child Care Providers from AVANCE. Family Childcare homes are also monitored for health and safety compliance on a bi-weekly basis.

Head Start

Center-based services are provided to preschool aged children 3-5 years old, utilizing The Creative Curriculum researched based preschool curriculum. In partnership with Shine Early Learning, Head Start teaching staff use Ready to Shine curriculum plans, content-rich themes designed for group learning and differentiating instruction, to enhance the teaching and learning in the classrooms and meet the needs of all children in the classroom

	Early Head Start Ages 0-3 & Pregnant Women	CCP Ages 0-4	Head Start Ages 3-5
Funded Enrollment	352	72	340
Cumulative Enrollment (Children)	455	100	351
Cumulative Enrollment (Pregnant Women)	63	N/A	N/A

Parent, Family, & Community Engagement

Families Served	383	86	325
Services Rendered	342	86	303

Health Information

	Begin	End	Begin	End	Begin	End
Physicals	416	416	98	99	332	334
Dentals	279	289	–	44	340	350
Immunizations	330	341	85	63	112	275

Mental Health Services

AVANCE ensures responsive and sensitive environments that identify, reduce, and prevent the impact of disabilities and mental health problems among infants, toddlers, preschool children and their families. The program staff collaborate with local early childhood intervention programs and Disability/Mental Health Specialist to assist the family with the child's developmental process. We use AGES and STAGES as the initial screener of all areas of development.

Parent Engagement

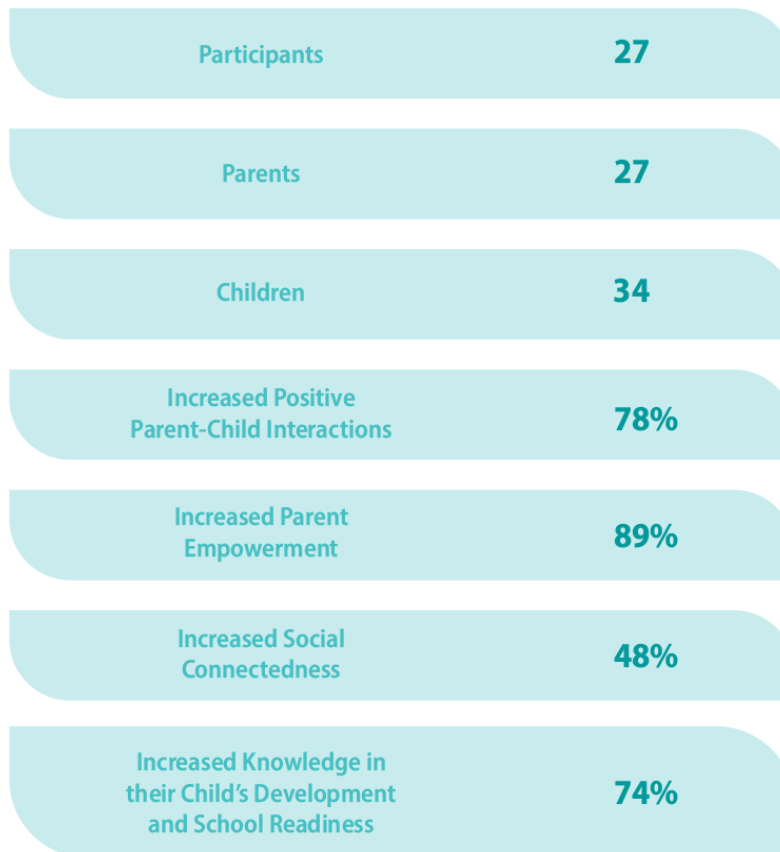
AVANCE began the 2021-2022 program year providing virtual services to children and families as the community continued to contend with the COVID 19 health crisis. Packets of educational materials were prepared and provided for families, which for some with the need, included hotspots and tablets. As families engaged with their children at home, home visitors also supported families in assessing their child's development through the use of Cognitive Toybox, a game-based and observational assessment system. The home-based program option allows one of AVANCE's core beliefs to ring true; Parents are in fact their child's first teacher and home is their first school. Families remain completely engaged in the teaching and learning of their child with the support and reassurance of home visitors. In-person services resumed as possible by April 2022.

During the in-person socialization opportunities, AVANCE and local community partners provided activities for families to rest, relax, and feel pretty with a Mother's Day makeover. This activity also allowed us to assess progress on personal goals and create additional next steps towards achieving family and personal success. Families had the opportunity to be involved in the program through monthly Family Engagement Meetings (FEN). Meetings are held at each center monthly and provide families opportunities to build social capital and to learn more about what is happening in their children's classrooms and resources available in the community.

AVANCE's core, Parent-Child Education Program (PCEP) graduated 13 participants from the Early Head Start program this year. The impact was clear: 78% of participants showed an increase in positive parent-child interactions, 89% reported an increase in parent empowerment, 48% reported an increase in social connectedness during a time of social distancing. Also, 74 % of participants showed an increase in knowledge of their child's development and school readiness. We are truly excited about the gains our participants have made and expect to see more and more families participate in our PCEP program in the coming years.



Outcomes Rio Grande Valley



School Readiness

During the 2021-2022 program year child assessment data was collected using Cognitive Toybox at four points in the year: Fall, Winter, Spring and Summer. The graph below shows on average how the Early Head Start children performed by domain for the program year. These domains are aligned with the Office of Head Start Early Learning Outcomes Framework and AVANCE's School Readiness goals.

The established program goal is 80% of children achieve "meeting" or "exceeding" status in each domain. For the Early Head Start program options, this goal was met in the Approaches to Learning, Cognition, Perceptual, Motor, and Social-Emotional Development domains in at least 2 checkpoint periods. Improvement in all domains throughout the year is evident as the goal could not be sustained. Additional coaching and training for Home Visitors and Family Child Care providers is included in the professional development plan for the upcoming year.

School Readiness Outcomes

Early Head Start Home Based School Readiness Data

Domain Outcomes

Approaches to Learning

90%

78%

81%

79%

Cognition

90%

83%

82%

79%

Language & Literacy Development

82%

78%

72%

72%

Fall

Winter

Spring

Summer

Perceptual, Motor & Physical Development

89%

76%

80%

81%

Social-Emotional Development

94%

80%

84%

79%

English Language Development

67%

78%

67%

77%





Subdomain Outcomes

Mathematics
Development

87%

77%

77%

72%

Scientific
Reasoning

91%

86%

85%

81%

 Fall  Winter  Spring  Summer

Language &
Communication

83%

80%

74%

73%

Literacy

79%

70%

68%

67%

Early Head Start Family Child Care Partnership School Readiness Data

Domain Outcomes

Approaches to Learning

85%

86%

82%

87%

Cognition

84%

82%

81%

80%

Language & Literacy Development

77%

71%

74%

74%

Fall

Winter

Spring

Summer

Perceptual, Motor, & Physical Development

90%

84%

83%

85%

Social-Emotional Development

84%

80%

85%

85%

English Language Development

84%

67%

76%

84%





Subdomain Outcomes

Mathematics
Development

80%

76%

75%

75%

Scientific
Reasoning

85%

85%

84%

83%



Language &
Communication

76%

71%

75%

75%

Literacy

80%

71%

73%

71%

Early Head Start Center Based School Readiness Data

Domain Outcomes

Approaches to Learning

87%

81%

82%

77%

Cognition

76%

81%

83%

75%

Language & Literacy Development

79%

73%

71%

67%



Fall



Winter



Spring



Summer

Perceptual, Motor, & Physical Development

81%

87%

85%

81%

Social-Emotional Development

83%

86%

85%

78%

English Language Development

67%

81%

56%

70%





Subdomain Outcomes

Mathematics
Development

70%

78%

78%

71%

Scientific
Reasoning

81%

84%

86%

79%



Language &
Communication

78%

71%

71%

66%

Literacy

82%

78%

71%

67%

Head Start Center Based School Readiness Data

Domain Outcomes

Approaches to Learning

78%

79%

81%

83%

Cognition

73%

66%

63%

66%

Language & Literacy Development

64%

61%

60%

59%



Fall



Winter



Spring



Summer

Perceptual, Motor, & Physical Development

80%

78%

80%

80%

Social-Emotional Development

81%

80%

81%

83%

English Language Development

63%

64%

76%

67%





Subdomain Outcomes

Mathematics
Development

65%

62%

58%

61%

Scientific
Reasoning

89%

72%

75%

78%

 Fall  Winter  Spring  Summer

Language &
Communication

68%

66%

71%

71%

Literacy

61%

58%

55%

54%

Federal Monitoring

AVANCE went through a FOCUS Area I monitoring review in February 2021. The federal review teams monitored all AVANCE HS/EHS programs. There were no areas of deficiency found during this review. Focus Area 2 monitoring review scheduled for the 2022-23 program year.

2021 Financial Audit

The 2021 financial audit was completed and reviewed by the governing board. This audit did not identify any material weakness or significant deficiencies in internal control over financial reporting. Furthermore, this audit did not identify any material weaknesses or significant deficiencies in the internal control over of major programs. The 2022 Financial Audit is under draft and will be available for review once completed and approved by the governing board.





2020-21 Financial Report

	2021 EHS Colonias	2020-21 EHS CCP
<i>Funds Awarded</i>	\$ 1,245,555	\$ 999,313
Training & Technical Assistance	\$ 26,955	\$ 20,184
In-Kind Donations	\$ 147,915	\$ 187,581
Total Budget	\$ 1,420,425	\$ 1,207,078
<i>Program Expenses</i>		
Personnel & Fringe	\$ 993,200	\$ 451,285
Travel	\$ 2,224	\$ 2,102
Supplies	\$ 123,215	\$ 50,559
Equipment	\$ 0	\$ 0
Contractual	\$ 37,080	\$ 463,863
Facilities/Construction	\$ 0	\$ 0
T&TA	\$ 26,955	\$ 20,184
In-Kind	\$ 147,915	\$ 187,581
Other	\$ 89,836	\$ 31,504
Total Budget	\$ 1,420,425	\$ 1,207,078
Cost Per EHS Participant	\$ 14,204	\$ 16,765

2021-22 Financial Report

	2021 EHS	2021 HS
<i>Funds Awarded</i>	\$ 4,309,818	\$ 3,428,655
Training & Technical Assistance	\$ 70,868	\$ 32,969
In-Kind Donations	\$ 389,831	\$ 361,989
Total Budget	\$ 4,770,517	\$ 3,823,613

Program Expenses

Personnel & Fringe	\$ 3,519,611	\$ 2,785,612
Travel	\$ 14,684	\$ 11,212
Supplies	\$ 176,622	\$ 244,801
Equipment	\$ 0	\$ 0
Contractual	\$ 331,726	\$ 255,601
Facilities/Construction	\$ 0	\$ 0
T&TA	\$ 70,868	\$ 32,969
In-Kind	\$ 389,831	\$ 361,989
Other	\$ 267,175	\$ 131,429
Total Budget	\$ 4,770,517	\$ 3,823,613

Cost Per EHS Participant	\$ 22,188	\$ 14,006
---------------------------------	------------------	------------------



Partners

Thank You!

AVANCE thanks the following organizations and members of the community for their donations, partnerships, and collaborations during the 2021-22 Program Year.

- *AARP*
- *Dr. Yolanda Hill*
- *BCFS*
- *Ashley's Pediatrics*
- *Buckner*
- *Chamber of Commerce*
- *Coaster Company of America*
- *Cognitive Toybox*
- *Cynthia Artega*
- *Industrial Works*
- *ECL (Region One)*
- *Milagro Clinic*
- *Clinica Familiar*
- *Agua Dental*
- *Superior*
- *First United Methodist Church*
- *HEB*
- *UTRGV*
- *Winter Haven Park Residents*
- *Pastor Mark Porterfield-UMC*
- *Food Bank (Hidalgo)*
- *Easterseals*
- *WIC*
- *Hidalgo County Head Start*
- *Hidalgo County Precinct 2*
- *Jessica Riojas, LVN*
- *Mary C. Hernandez,*
- *Otto & Robin Lawson*
- *Patricia Lopez, RD*
- *PSJA ISD*
- *Queens for a Cause*
- *RGV Council*
- *Rio Grande Mobile X-Rays (George Garcia)*
- *Sara Montemayor, CCC SLP*
- *Shine Early Learning*
- *Sonic*
- *South Texas Community College*
- *Val Verde Community Center*
- *Dairy Queen (Hidalgo)*



AVANCE®

© AVANCE Inc. all rights reserved