



Head Start/Early Head Start
Annual Report
2021-22

About AVANCE



Our Mission

AVANCE creates pathways to economic mobility for predominantly Latino families through high quality, culturally responsive, two-generation programming that ensures school-readiness for young children and opportunities for parents to build social and economic capital.

Our Vision

We envision a world where all children and families have equitable access to resources and opportunities to reach their fullest potential, transforming the communities in which we live.

The AVANCE Way

Meeting People Where They Are

- We utilize a strengths-based approach when working with children, parents, providers, and staff
- We recognize that all individuals have unique needs and we design individualized programs/ trainings to meet those needs
- We recruit in the community – going to where the people are rather than expecting them to come to us

Addressing Root Causes of Inequities

- We acknowledge the systemic inequities that our families, children, and staff face and work every day to remove barriers to access and opportunities to further their education and economic mobility
- We bring community resources to our families and staff



- We teach, support, and encourage our parents and staff to advocate for themselves and their families

Providing Culturally Responsive Programming

- We recognize and celebrate the cultural diversity of our participants and our staff
- We provide culturally responsive programming that is offered in the native language of participants
- We foster a diverse working environment that acknowledges and celebrates differences
- We ensure that our staff reflects the cultural, linguistic, and lived experiences of the families, children, and providers we serve

Empowering All Individuals to be Leaders

- We recognize that our parents are leaders of their households
- We encourage parents and staff to be leaders in their communities
- We act as a catalyst for families, children, and staff to build confidence, strength, and self-sufficiency
- We offer opportunities to build leadership -- 46% of our staff are alumni of our programs



Program Options

Home Based

AVANCE uses the home environment to help parents create rich learning opportunities that build on everyday routines and support their child's development. Families receive 90 minute weekly home visits utilizing the Parents as Teachers (PAT) curriculum. Children and families also participated in 2-3 group socialization activities per month.

Family Child Care (CCP)

AVANCE delivers the full range of Early Head Start Services to children ages 0-4, by contracting with licensed family childcare providers in their home or other family-like setting. AVANCE monitors for health/safety and compliance every two weeks. As part of the Family Child Care partnerships, all Family Childcare providers receive training, coaching, and support in the implementation of the early childhood curriculum—Creative Curriculum for Family Child Care Providers from AVANCE. Family Childcare homes are also monitored for health and safety compliance on a bi-weekly basis.

	Home-Based Ages 0-3 & Pregnant Women	CCP Ages 0-4
Funded Enrollment	100	72
Cumulative Enrollment (Children)	129	100
Cumulative Enrollment (Pregnant Women)	27	N/A

Parent, Family, & Community Engagement

Families Served	108	86
Services Rendered	108	86
Participation	77%	92%

Health Information	Begin	End	Begin	End
Physicals	127	127	98	99
Dentals	–	51	–	44
Immunizations	60	63	85	63



Mental Health Services

AVANCE ensures responsive and sensitive environments that identify, reduce, and prevent the impact of disabilities and mental health problems among infants, toddlers, and their families. The program staff collaborate with local early childhood intervention programs and Disability/Mental Health Specialist to assist the family with the child's developmental process. We use AGES and STAGES as the initial screener of all areas of development.

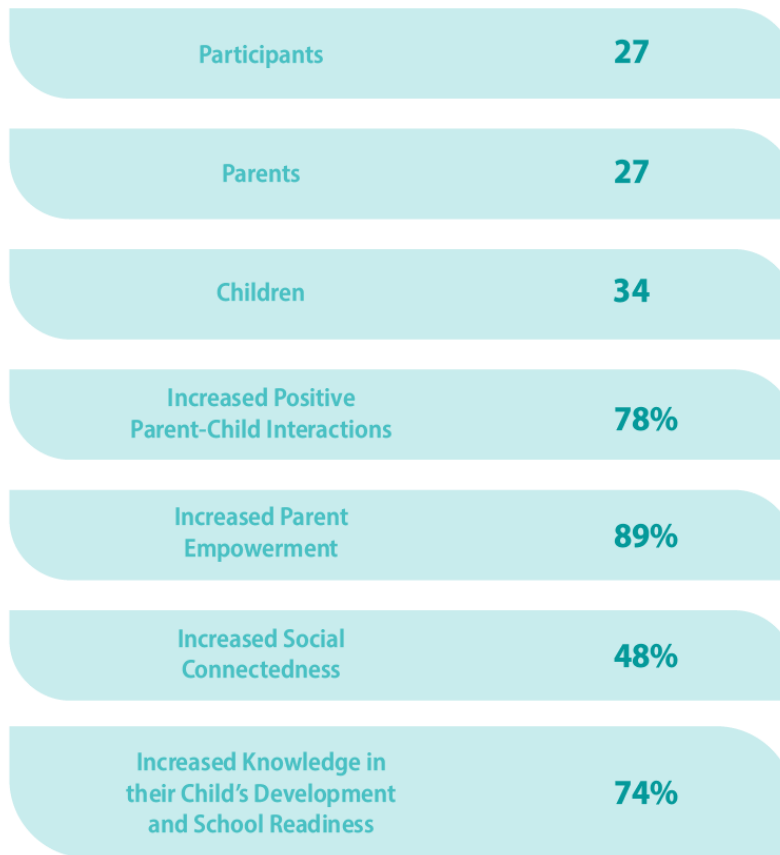
Parent Engagement

AVANCE began the 2021-2022 program year providing virtual services to children and families as the community continued to contend with the COVID 19 health crisis. Packets of educational materials were prepared and provided for families, which for some with the need, included hotspots and tablets. Family Advocates and home visitors supported families in gaining access to Microsoft Teams, a platform used to deliver synchronous instruction. Meeting families where they are required staff to engage with families also using WhatsApp and Facebook Live to communicate and interact asynchronously. As families engaged with their children at home, home visitors also supported families in assessing their child's development through the use of Cognitive Toybox, a game-based and observational assessment system. The home-based program option allows one of AVANCE's core beliefs to ring true; Parents are in fact their child's first teacher and home is their first school. Families remain completely engaged in the teaching and learning of their child with the support and reassurance of home visitors. In-person services resumed as possible by April 2022.

During the in-person socialization opportunities, AVANCE and local community partners provided activities for families to rest, relax, and feel pretty with a Mother's Day makeover. This activity also allowed us to assess progress on personal goals and create additional next steps towards achieving family and personal success.

AVANCE's core, Parent-Child Education Program (PCEP) graduated 13 participants from the Early Head Start program this year. The impact was clear: 78% of participants showed an increase in positive parent-child interactions, 89% reported an increase in parent empowerment, 48% reported an increase in social connectedness during a time of social distancing. Also, 74 % of participants showed an increase in knowledge of their child's development and school readiness. We are truly excited about the gains our participants have made and expect to see more and more families participate in our PCEP program in the coming years.

Outcomes Rio Grande Valley



School Readiness

During the 2021-2022 program year child assessment data was collected using Cognitive Toybox at four points in the year: Fall, Winter, Spring and Summer. The graph below shows on average how the Early Head Start children performed by domain for the program year. These domains are aligned with the Office of Head Start Early Learning Outcomes Framework and AVANCE's School Readiness goals.

The established program goal is 80% of children achieve "meeting" or "exceeding" status in each domain. For the Early Head Start program options, this goal was met in the Approaches to Learning, Cognition, Perceptual, Motor, and Social-Emotional Development domains in at least 2 checkpoint periods. Improvement in all domains throughout the year is evident as the goal could not be sustained. Additional coaching and training for Home Visitors and Family Child Care providers is included in the professional development plan for the upcoming year.

School Readiness Outcomes

EHS Home Based School Readiness Data

Domain Outcomes

Approaches to Learning

90%

78%

81%

79%

Cognition

90%

83%

82%

79%

Language & Literacy Development

82%

78%

72%

72%

Fall

Winter

Spring

Summer

Perceptual, Motor & Physical Development

89%

76%

80%

81%

Social-Emotional Development

94%

80%

84%

79%

English Language Development

67%

78%

67%

77%



EHS Home Based School Readiness Data

Subdomain Outcomes

Mathematics Development

87%

77%

77%

72%

Scientific Reasoning

91%

86%

85%

81%

Fall Winter Spring Summer

Language & Communication

83%

80%

74%

73%

Literacy

79%

70%

68%

67%

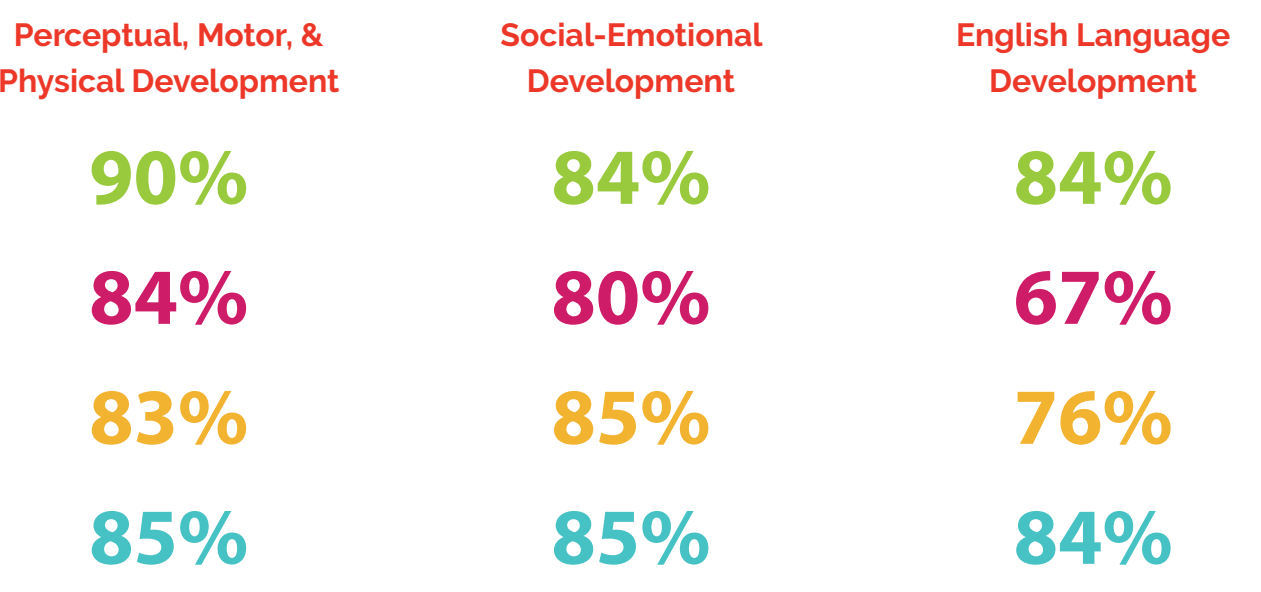
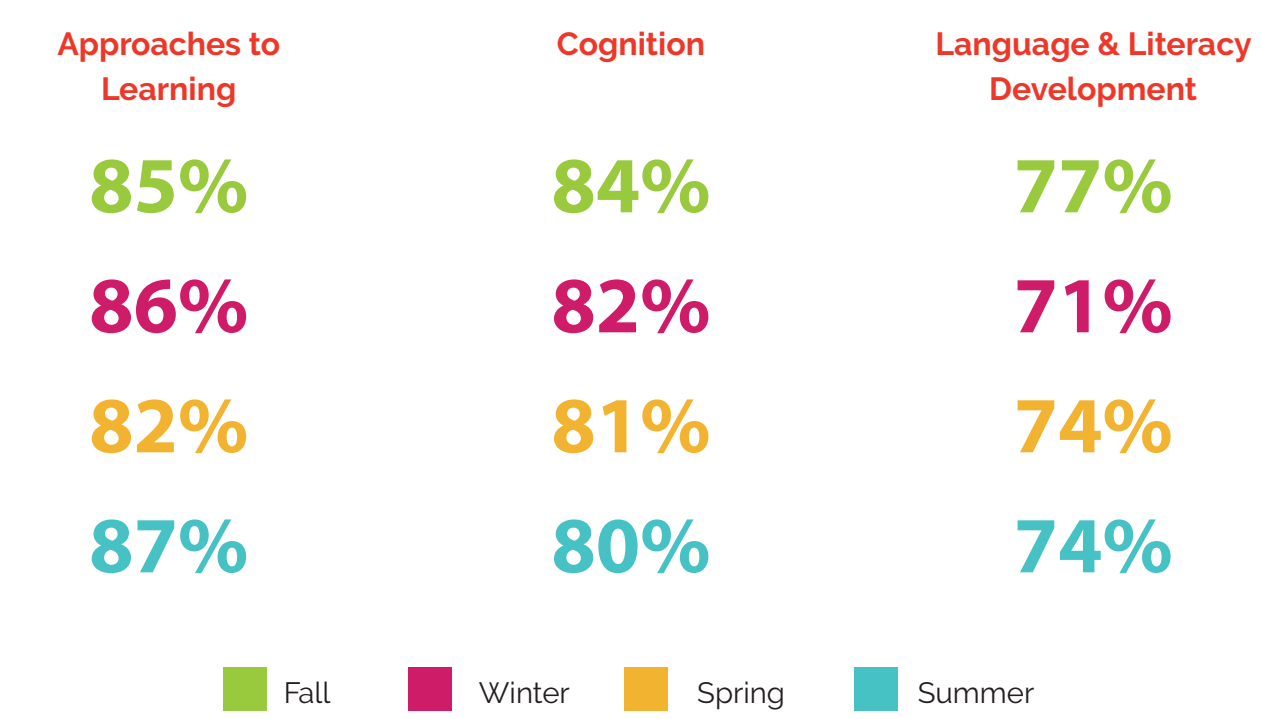




EHS Family Child Care Partnership School

Readiness Data

Domain Outcomes





EHS Family Child Care Partnership School Readiness Data

Subdomain Outcomes

Mathematics Development

80%

76%

75%

75%

Scientific Reasoning

85%

85%

84%

83%

 Fall  Winter  Spring  Summer

Language & Communication

76%

71%

75%

75%

Literacy

80%

71%

73%

71%

Federal Monitoring

AVANCE went through a FOCUS Area I monitoring review in February 2021. The federal review teams monitored both the Home Base and CCP Programs. There were no areas of deficiency found during this review.

2021 Financial Audit

The 2021 financial audit was completed and reviewed by the governing board. This audit did not identify any material weakness or significant deficiencies in internal control over financial reporting. Furthermore, this audit did not identify any material weaknesses or significant deficiencies in the internal control over of major programs. The 2022 Financial Audit is under draft and will be available for review once completed and approved by the governing board.



2020-21 Financial Report

	2021 EHS Colonias	2020-21 EHS CCP
<i>Funds Awarded</i>	\$ 1,245,555	\$ 999,313
Training & Technical Assistance	\$ 26,955	\$ 20,184
In-Kind Donations	\$ 147,915	\$ 187,581
Total Budget	\$ 1,420,425	\$ 1,207,078
<i>Program Expenses</i>		
Personnel & Fringe	\$ 993,200	\$ 451,285
Travel	\$ 2,224	\$ 2,102
Supplies	\$ 123,215	\$ 50,559
Equipment	\$ 0	\$ 0
Contractual	\$ 37,080	\$ 463,863
Facilities/Construction	\$ 0	\$ 0
T&TA	\$ 26,955	\$ 20,184
In-Kind	\$ 147,915	\$ 187,581
Other	\$ 89,836	\$ 31,504
Total Budget	\$ 1,420,425	\$ 1,207,078
Cost Per EHS Participant	\$ 14,204	\$ 16,765

Partners

Thank You!

AVANCE thanks the following organizations and members of the community for their donations, partnerships, and collaborations during the 2021-22 Program Year.

- *AARP*
- *Dr. Yolanda Hill*
- *BCFS*
- *Ashley's Pediatrics*
- *Buckner*
- *Chamber of Commerce*
- *Coaster Company of America*
- *Cynthia Artega*
- *Industrial Works*
- *ECI (Region One)*
- *Milagro Clinic*
- *Clinica Familiar*
- *Agua Dental*
- *Superior*
- *First United Methodist Church*
- *HEB*
- *UTRGV*
- *Winter Haven Park Residents*
- *Pastor Mark Porterfield-UMC*
- *Food Bank (Hidalgo)*
- *Easterseals*
- *WIC*
- *Hidalgo County Head Start*
- *Hidalgo County Precinct 2*
- *Jessica Riojas, LVN*
- *Mary C. Hernandez,*
- *Otto & Robin Lawson*
- *Patricia Lopez, RD*
- *PSJA ISD*
- *Queens for a Cause*
- *RGV Council*
- *Rio Grande Mobile X-Rays (George Garcia)*
- *Sara Montemayor, CCC SLP*
- *Sonic*
- *Val Verde Community Center*
- *Dairy Queen (Hidalgo)*

